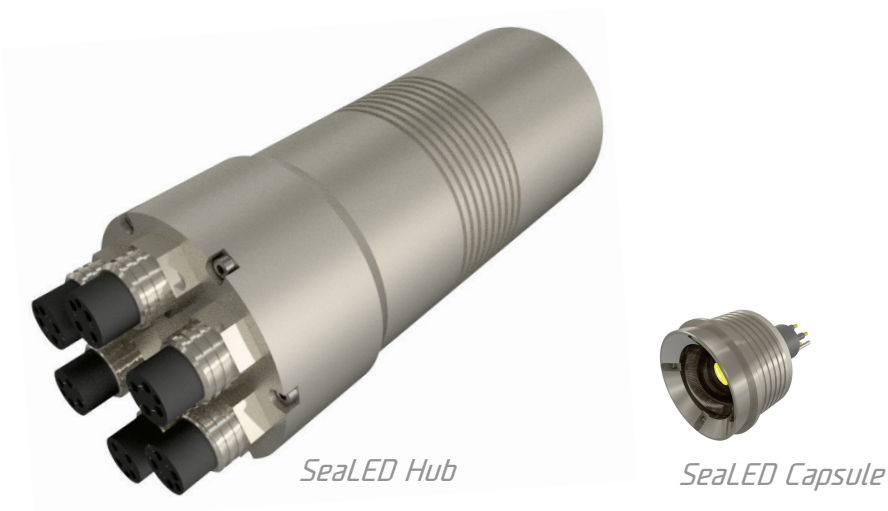




Imenco **SeaLED** System – Subsea LED Light Hub



The Imenco **SeaLED** System - Subsea LED Light Hub is the central power and control unit in Imenco's Distributed Subsea Lights System.

The connected addressable Imenco **SeaLED** System - Subsea LED Light Capsules can be controlled by Ethernet, RS232/RS485, trigger voltage or external PWM signal. The unit can be programmed to strobe function. Full API documentation available for complete integration.

Dimensions ex con.	Ø 79 / 74 x 238 (mm) 3.1 / 2.9 x 9.3 (in)
Max connected LED capsules	6 (dimming in pairs)
Max light output	60.000 Lumen
Control formats	Ethernet, RS232/RS485, PWM, Trigger
Control methods	WEB-interface, GUI app, Serial Commander
Trigger input	+5VDC
Strobe	0,5 Hz to 25
Overheating protection	Yes
Housing	Titanium
Depth rating	6,000 msw
Standard input connectors	SubConn DBH13M + BH6M
Standard output connector	SubConn MCBH6F
Input voltage	24VDC
Mass in water	1,8 Kg