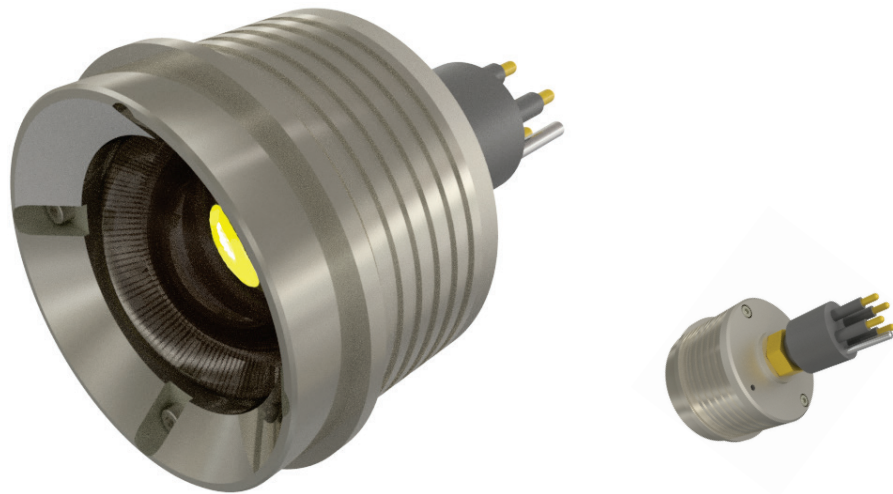


Imenco **SeaLED** System – Subsea LED Light Capsule



The Imenco **SeaLED** System - Subsea LED Light Capsule is a very high output multipurpose light unit for ROV's, tools and inspection points. The unit is powered from, and controlled by, the Imenco **SeaLED** System - Subsea LED Light Hub, which can be controlled by Ethernet, RS232/RS485 or external PWM.

Light output (Lumens)	> 10.000
Light CRI typ.	92
Light temperature	5,000 Kelvin
Light fan angle	95°
Front port	Acrylic
Overheating protection	Yes
Housing	Hiduron
Depth rating	6,000 msw
Standard connector	MCBH6M
Mass in water	0.3 Kg