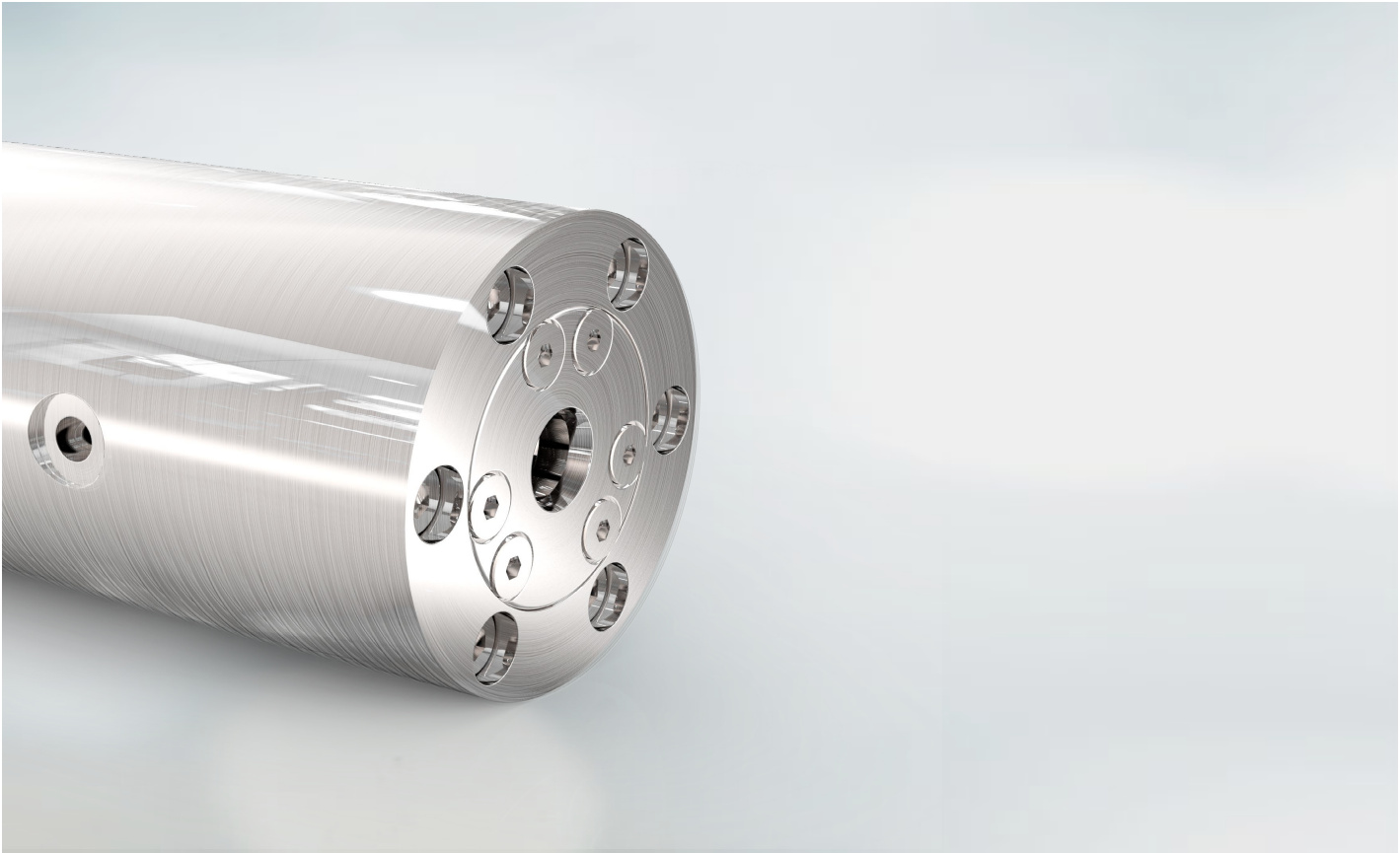


# Valve Retrieval Tool



Can operate subsea valves with broken handles

The tool clamps around free rods or stems and allows the ROV to rotate the tool. This will make it possible for the ROV to operate valves with damaged handles.

For further information, email  
[commercial@imenco.com](mailto:commercial@imenco.com)

# Valve Retrieval Tool

## Advantages

- Easy operation with ROV manipulator
- Small size
- Used successfully in subsea recovery operations
- Materials: S165 M, titanium
- Designed for  $\text{Æ}14$  axel dim, insert to be changed to fit other dimensions

## Technical Information

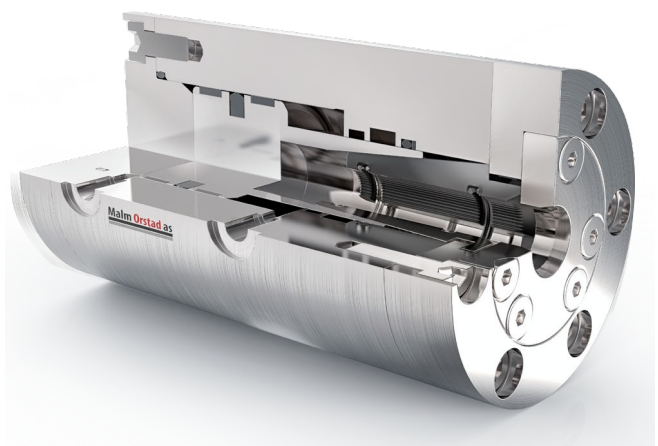
- Hydraulic operation of clamping
- ROV operated
- STD fishtail interface

## References

Statoil, used at 158m depth to operate a damaged down hole safety valve



MO100732



Cross Section