

Retrofit Anode Brackets And Sleds



Retrofit Anodes can be configured to suit any operational requirement including size

Imenco has developed brackets, baskets and sleds to carry the sacrificial anodes. Each project, big or small, has their specific requirements and preferable solutions, thus many different variations of these products have been designed and produced by Imenco. Most Imenco Retrofit Anode Clamps have identical bracket and bonding cable interface(s), ensuring great flexibility.

For further information, email
commercial@imenco.com

Retrofit Anode Brackets And Sleds



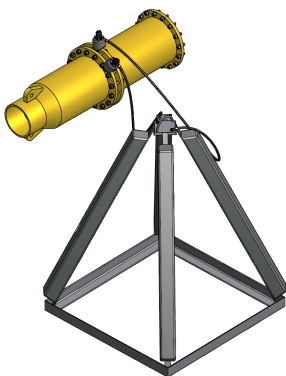
I-Bracket

Piranha™, Imenco Torque Tool



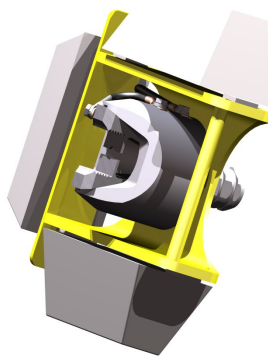
S-Bracket

Humboldt™ X attached to pad-eye on mooring line wire socket



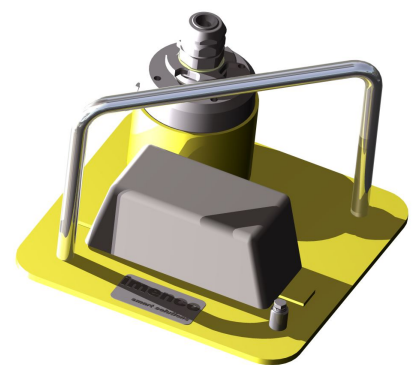
Anode Sled

Two Piranha™ Clamps connect the anode sled to the flanges



Orbital Bracket

Mounted on Piranha™ for direct installation



Anode Basket

With storage bay for Retrofit Clamp