



# SHARK RANGE

WHEN QUALITY VISION IS ESSENTIAL

HQ Haugesund, Norway  
+47 52 86 41 00  
[imenco@imenco.com](mailto:imenco@imenco.com)

Aberdeen, Scotland  
+44 (0)1224 701749  
[uk@imenco.com](mailto:uk@imenco.com)

Houston, North America  
+1 (713) 480 7777  
[us@imenco.com](mailto:us@imenco.com)

Singapore, Asia  
+65 9382 8667  
[imenco@imenco.com](mailto:imenco@imenco.com)

[IMENCO.COM](http://IMENCO.COM)

# User Manual

SUBSEA DIGITAL STILLS CAMERAS

Tiger  
**SHARK**



AVIATION | DIVING | ENGINEERING & DEVELOPMENT | LIFTING & HANDLING | SUBSEA | WORKSHOP

**imenco**  
SMART SOLUTIONS

# Imenco

Imenco is a major EPC-contractor to the maritime industry. We design, develop, and manufacture a wide range of systems and products such as Diving Systems, Helicopter Refuelling Systems, Ex Cameras, Lifting and Handling products, Subsea Cameras and Subsea Tools including Subsea Lights and Lasers. Our customers benefit from over thirty years' experience in the industry, adding value and providing smart solutions.

# Contents

Introduction.....	4
Safety guidelines.....	5
Before use .....	5
Item checklist .....	5
Function test.....	5
Installation.....	6
System requirements .....	6
Tiger Shark connections.....	6
Tiger Shark communication.....	6
Operation.....	7
Connector configuration .....	7
Remote controller .....	8
Camera focus operation.....	9
Interface box.....	10
Ethernet remote control and download mode .....	10
Client PC, software installation.....	11
Tiger Shark remote software.....	13
Downloading image files from camera .....	15
Setting network IP addresses .....	16
Enable/disable Ethernet.....	17
Tiger Shark with timer.....	18
Sleep mode/operating the camera.....	18
Tiger Shark remote software.....	18
Programming the timer .....	19
Timer functions .....	19
Long term storage.....	19

Maintenance .....	20
Service .....	20
Technical specification.....	21
Camera.....	21
Lens .....	21
Physical properties .....	21
Power .....	21
Appendix 1 - Connector configuration .....	22
Tiger Shark housing main connector .....	22
Tiger Shark housing flash connector .....	22
External RS232 remote control unit.....	22
Appendix 2 - Interface overview .....	23
Appendix 3 - RS232 remote control protocol .....	24
Control example.....	24
Remote control functions.....	25
Appendix 4 - Checklist/Final Test.....	27
Notes.....	29
Worldwide Warranty .....	31

# Introduction

THANK YOU FOR PURCHASING THIS IMENCO PRODUCT.

The Imenco Tiger Shark is a high quality digital stills subsea camera, perfect for ROV use or as a high resolution stand-alone camera for research purposes. Integrated RS232, Ethernet control and download capabilities give the operator full control of all camera functions. With a resolution of 14.1 megapixels it is ideal for zooming in and inspecting fine details. The camera also has the capability to record video in 720p High Definition resolution.

The Tiger Shark can be supplied with a timer function and is compatible with the Lantern Shark external flash unit.

## Safety guidelines

**IMPORTANT!** The Imenco Tiger Shark is a technically advanced product. Please make sure to read and understand all sections in this manual before installing or operating this product. Installation of this product should only be performed by qualified personnel.

**WARNING!** This product contains no user serviceable parts. Do not open, alter or disassemble this product. Failure to comply with this warning can result in electric shock, damage to equipment and void of warranty.

**IMPORTANT:** If the Tiger Shark camera is used without Lantern Flash, a dummy plug must be mounted on the flash connector.

## Before use

### ITEM CHECKLIST

Before starting, check that the following items have been included with your Tiger Shark camera. Contact Imenco or your local dealer if anything is damaged or missing.

- |                                   |   |
|-----------------------------------|---|
| 1. Tiger Shark subsea camera unit | 5. Ethernet cable                                   |
| 2. Interface box                  | 6. Peli case storage box                            |
| 3. Remote controller              | 7. RS232 cable (serial cable)                       |
| 4. Power cable                    | 8. USB flash drive with drivers, software & manuals |

### FUNCTION TEST

Make sure your new product is working as intended. Imenco cannot be held liable for any loss or inconvenience caused by the use of a faulty product.

A preliminary test should be performed prior to full-scale installation. This is to familiarize the users with control functions and to verify that the system is fully operational after shipment.

Use the supplied test cable and connect the system on a bench according to Appendix 2. You should also test the "video out" and the ROV connection.

# Installation

Installation of this product should only be performed by qualified personnel.  
Mount the camera on a secure and vibration free surface if possible.

## CONNECTION LINKS IN THE CAMERA SYSTEM

The following must be verified before installation:

- RS232 link for camera control functions
- Ethernet link for picture download and optional control functions
- Power source 18 - 36V DC, 2.0A
- Composite video link

## TIGER SHARK CONNECTIONS

See Appendix 2 for Interface box connection diagram.

## CAMERA COMMUNICATION

The camera is operated using RS232 (RS485 optional) and/or Ethernet communication.

## Operation

### Caution:

Please make sure power is switched off before connecting or disconnecting Tiger Shark cables. Avoid long term testing in air as overheating can cause damage to internal components.

### CONNECTOR CONFIGURATION

Study the connector configuration diagram in Appendix 1 and make connections accordingly.

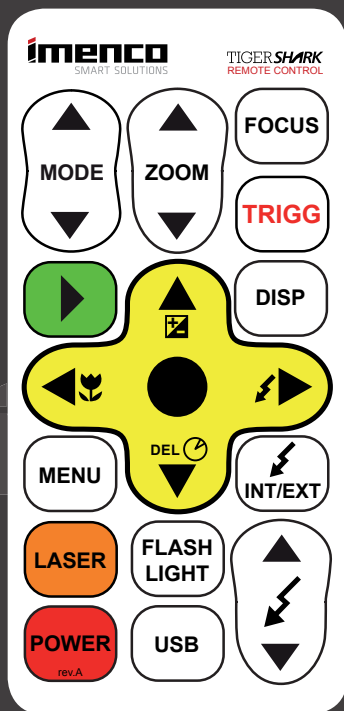
### REMOTE CONTROLLER

The topside remote control is used to operate the camera and change camera settings. Camera menu options and functionality settings are displayed on the video monitor and can be changed as needed.

A PC software remote control interface is also available. It has the same button layout and functionality as the physical remote control, allowing the camera to be controlled via the computer. The bundled Tiger Shark remote control software is limited in functionality and can be used to turn the camera on/off, zoom in/out and enable USB mode. The limited remote control can be upgraded to a fully functional version by ordering a license from Imenco.



## Remote controller Functions



<b>MODE UP / DOWN:</b>	Select camera mode
<b>ZOOM IN / OUT:</b>	Camera zoom function
<b>FOCUS:</b>	Refocus camera
<b>TRIGG:</b>	Shutter release
<b>► SYMBOL</b>	Playback button
<b>ARROW UP / EXPOSURE:</b>	Control button / exposure control
<b>DISP:</b>	Select information to be shown on screen
<b>ARROW LEFT / MACRO:</b>	Control button / Set macro focusing mode
<b>● SYMBOL</b>	Menu confirmation button / picture settings
<b>ARROW RIGHT / FLASH:</b>	Control button / Set flash mode
<b>MENU:</b>	Displays the camera menu
<b>ARROW DOWN / TIMER:</b>	Control button / Set trigger timer
<b>INT / EXT*:</b>	Select internal or external flash unit
<b>LASER:</b>	Not in use
<b>FLASHLIGHT:</b>	Turn external flashlight On / Off
<b>FLASH UP / DOWN:</b>	Increase / decrease flash strength
<b>POWER:</b>	Camera On / Off
<b>USB:</b>	Camera in USB mode for image file download (Ethernet).

\*The 6,000MSW Titanium body version is not equipped with internal flash unit.

## Camera focus operation

The Tiger Shark camera has two focus modes. Servo AF (Auto Focus) on or off. Servo AF is changed by pressing the <MENU> button, selecting Servo AF in the menu and turning it on/off with the <LEFT> or <RIGHT> button.



**Servo AF on:** When Servo AF is turned on and the <FOCUS> remote button is pressed, the camera will do a continuous focus search for as long as the button is pressed. When <TRIGGER> is pressed the camera will do a continuous focus search and take a picture with the current focus when the button is released.

**Servo AF off:** When Servo AF is turned off and the <FOCUS> remote button is pressed, the camera will search until focus is found and lock focus (indicated by showing AFL (Auto Focus Lock) in the display) when the button is released. When the camera focus is locked, no further focus changes can be done until the AFL is released. To release AFL press the <LEFT> remote button and the AFL display indication will disappear. Changing zoom settings with the zoom buttons will also release AFL lock. If <TRIGGER> is pressed while AFL is locked, a picture is taken using the locked focus setting. If <TRIGGER> is pressed and AFL is not locked, the camera will search and lock focus a single time for each picture taken.

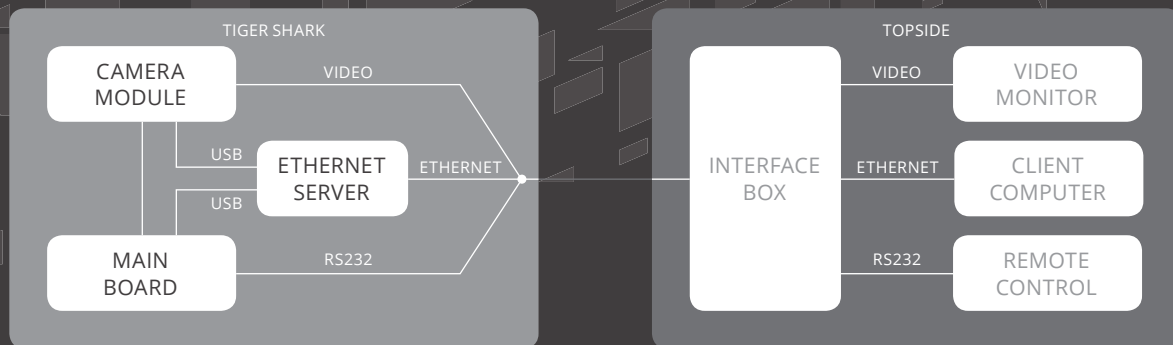
## Interface box

Connect all units to the interface box as shown in the diagram below. Power must also be connected on the rear side of the interface box. You will find a connection diagram of the interface box in Appendix 2.

## Ethernet remote control and download mode

This mode allows you to control the camera remotely and copy image files from the camera storage to a computer via an Ethernet connection. The following procedures will guide you through the software and driver installation process.

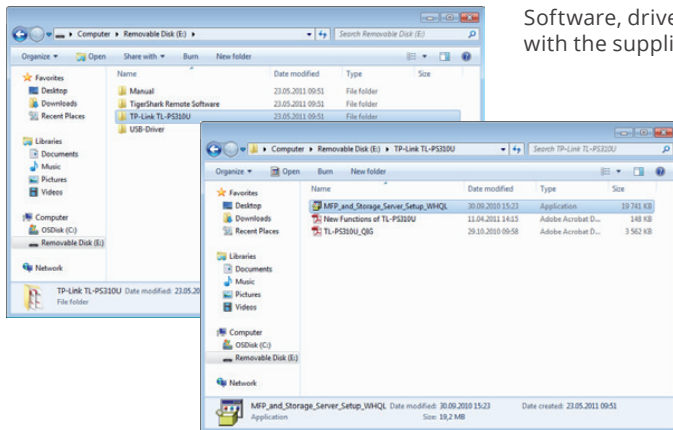
TIGER SHARK CONNECTION DIAGRAM:



## Client PC, software installation

All Tiger Shark cameras have Ethernet capability. The Ethernet Server client and USB driver software support Windows XP, Vista & Windows 7 (recommended) and Tiger Shark Remote Software. The bundled Tiger Shark remote control software is limited in functionality and can only be used to turn the camera on/off, zoom in/out and enable USB mode. An optional fully featured version of the remote control is available on request. Ethernet image file transfer is a standard feature and does not need to be specified.

Software, drivers and manuals are all included with the supplied Imenco USB flash drive.



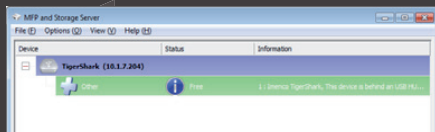
The installation has two steps. First you must install the Ethernet Server software (MFP). Start the **"MFP\_and\_Storage\_Server\_Setup\_WHQL"** install file and follow the on screen instructions.

## Client PC, software installation



After a successful installation you will have a new desktop icon named "Launch MFP and Storage Server". Double-click the new icon to start the Ethernet server client software.

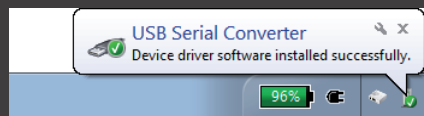
If the Tiger Shark camera is connected to the same network as the computer, it should now show up in the MFP client software. If not, the Tiger Shark Ethernet interface may be disabled (factory default).



See <Enable/disable Ethernet> for instructions on how to turn on the Ethernet interface. If the Tiger Shark device is shown, but is in a different network segment than the computer, see the <Setting network IP addresses> section.

With the Tiger Shark Ethernet interface enabled and the device available in the MFP client, select it and press <Connect Device>. This will activate a USB connection via Ethernet for the Tiger Shark control unit.

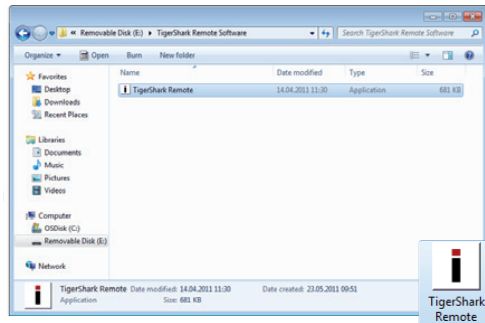
The first time this action is performed, Windows must install a USB device driver for the control unit. In Windows 7 this is automatic and you should get a Start panel message indicating a successful installation.



Windows XP and Vista may or may not be able to automatically install the USB driver depending on which Windows patches are installed. If Windows fails to automatically install USB drivers, the needed driver files are found in the <USB-Driver> folder on the USB flash drive.

## Tiger Shark remote software

The Tiger Shark Remote software has the same button layout and functionality as the physical RS232 remote control, allowing the camera to be controlled via the computer. The bundled Tiger Shark remote control software is limited in functionality and can be used to turn the camera on/off, zoom in/out and enable USB mode. The limited remote control can easily be turned into a fully functional version by ordering a license from Imenco.



Installation is straight forward since the software consists of a single executable file with no installer. Locate the file <Tiger Shark Remote.exe> in the <Tiger Shark Remote Software> folder on the USB flash drive. Copy the file to your Windows desktop (or a folder). The software is now ready for use. The remote software will fail with a missing <FTD2XX.DLL> error if the Tiger Shark USB driver has not been installed.

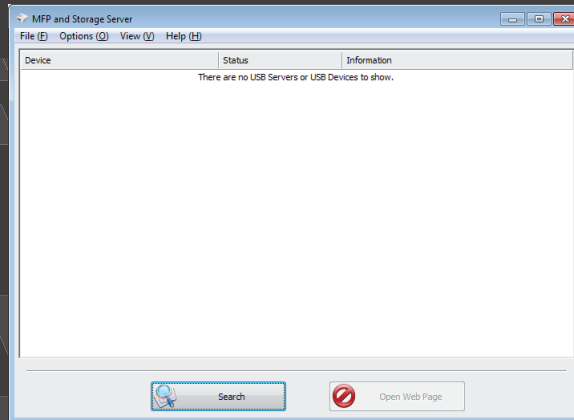
To operate the remote control, make sure that the <Tiger Shark> USB device is connected in the MFP client software. Locate and Double-click the <Tiger Shark Remote> icon to start the remote software.

# Tiger Shark remote software



The border of the remote control window will turn green if a Tiger Shark camera is found and ready to be controlled.

If not, the border will be red. In that case make sure that the MFP client found a <Tiger Shark> USB device and that it is connected. If there is no USB device listed, check the cables and make sure the Tiger Shark Ethernet interface is turned on as described in the <Enable/disable Ethernet> section of the manual.



## Downloading image files from camera

The Tiger Shark USB interface for image files transfer is activated by pressing the USB button on the remote. A new USB device named <Canon Digital Camera> will appear in the MFP client software. Select and connect the <Canon Digital Camera> device to access the image files in the camera. The first time the USB remote button is pressed and the camera USB device is connected in the MFP client, a Canon IXUS 130 driver will automatically be installed to enable camera access.

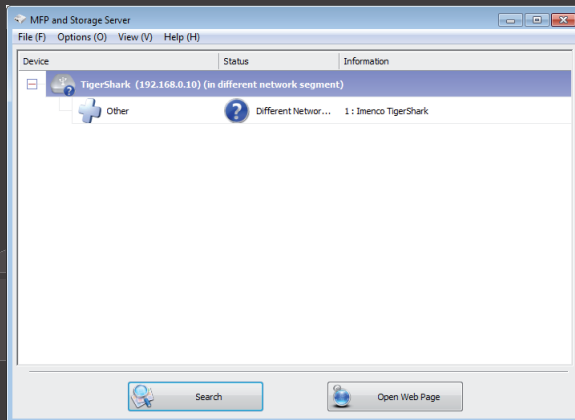
With the <Canon Digital Camera> device connected and the USB driver installed, a Wizard should appear and let you choose your preferred method of copying image files from the camera to the local hard-drive. The camera image files are also available by clicking the <Canon IXUS 130> icon in the <My Computer> desktop folder.





## Setting network IP addresses

By default the Tiger Shark will use any available DHCP server in the network to automatically select an IP address. If there is no DHCP server available the last known address will be used (192.168.0.10 by default). If this address does not match the IP address assigned to the computer, the MFP client will show the Tiger Shark device with a <in different network segment> warning. If so the computer IP address must be changed to match the Tiger Sharks IP address range.



For example if the Tiger Shark address is 192.168.0.10, the computer IP address can be set to 192.168.0.11 or any other free IP address in that range (192.168.0.1-255). After setting the correct IP address, restart the MFP client and there should no longer be a <in different network segment> warning. Communication with the Tiger Shark device is now possible.

## Enable/Disable Ethernet



Some ROV installations still use unshielded wires for video transmission. With unshielded video wires there is a high chance that the Ethernet signal will generate noise in the video signal. To prevent video noise while operating the ROV, it is possible to completely disable the Tiger Shark Ethernet interface (factory default). While the interface is disabled the camera can only be operated using the RS232 remote control.



Procedure: Make sure the Tiger Shark camera is off (no video signal). Using the RS232 remote control, press and hold down the <Power> button. The Tiger Shark camera will turn on and start showing a live video feed. Keep holding down the <Power> button until the Tiger Shark turns off again (approximately 10 seconds).

The Ethernet interface is now either enabled or disabled depending on the previous state. When the Ethernet interface is disabled no Tiger Shark device will appear in the MFP client software. The link status light on the Ethernet switch or computer network port connected to the Tiger Shark will also indicate if the Ethernet interface is turned on. If disabled, the USB remote control button will momentarily enable the Ethernet interface for image file transfer.

## Tiger Shark with timer

The Imenco Tiger Shark with Timer functionality is used to automatically take pictures at a set interval. The camera will enter a deep sleep mode between pictures with minimal power consumption, and enables the system to stay operational for years (>10 years estimated) without recharging. The Tiger Shark with Timer has certain operational differences compared to the standard version.

### SLEEP MODE / OPERATING THE CAMERA

Tiger Shark with Timer will enter a deep sleep mode when powered down. Sleep mode enables the camera to wait long periods of time (>999 days) before taking a picture at the given interval. To terminate deep sleep mode and power up the camera, the user must press the power button twice within 3 seconds. The camera can now be operated as normal, but please note that if the timer is set, the camera will continue to take pictures at the interval specified by the Timer function. The camera will not re-enter sleep mode until the user manually turns the camera off again.

### TIGER SHARK REMOTE CONTROL SOFTWARE

To connect and control/configure the camera using the PC remote control software, the camera must first be turned on to enable the Ethernet interface. Because of the deep sleep mode, the camera can only be turned on using the standard RS232 remote control. After the camera has been turned on, the Ethernet interface will be available and the remote control software can be operated as usual. The camera will not re-enter sleep mode for as long as the remote control software is connected and the camera is turned on.

## Tiger Shark with timer

### PROGRAMMING THE TIMER

When a Tiger Shark camera with built in Timer function is connected to the Remote Control software, a "Timer picture interval" panel will appear to enable user configuration of the Timer.

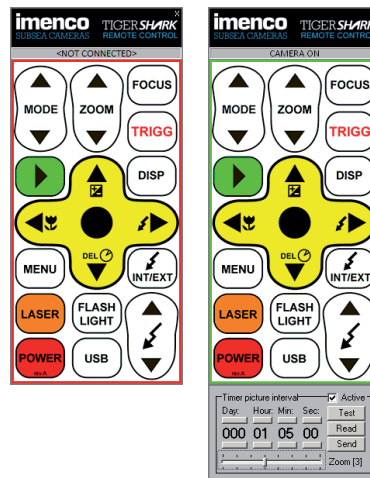
### TIMER FUNCTIONS

DAY	HOUR	MIN	SEC	Set the Timer picture interval
ACTIVE	Uncheck this option and transfer to camera to disable timer functionality			
TEST	This option is used to test the current Timer settings			
READ	Read and show the current Timer settings from the camera			
SEND	Transfer changes in the Timer settings to the camera*			
ZOOM	Set the zoom position for the camera 0 - 7 (wide-tele)			

\*Please note that the user must press <Send> to transfer any changes to the camera. It is also recommended to perform a <Read> after transferring settings to verify the changes.

### LONG TERM STORAGE

To minimize power drain on the internal battery, please make sure that the Timer functionality is turned off before long term storage. To disable the Timer function, uncheck the <Active> option in the "Timer picture interval" panel and transfer the new setting to the camera by pressing <Send>.



## Maintenance

After use in seawater or other corrosive environments, rinse unit and cables in fresh water.

Inspect the front port for dirt and dust and remove any surface dirt using compressed air. Clean the front port glass using a mild detergent and a soft cloth. Do not use alcohol or solvent based cleaning solutions! Avoid circular wiping patterns. Reapply silicon based lubricant to the connector regularly as needed.

## Service

This product contains no user serviceable parts. Service and modifications are to be carried out by Imenco personnel or by qualified third party after appointment. Failure to comply may result in personal injury, damage to equipment and loss of warranty.

## Technical specification

### CAMERA

Image device:	1 / 2.3 type CCD, DIGIC 4 with iSAPS technology
Image resolution:	14.1 MP (4320 x 3240)
Memory internal:	32GB flash memory standard
Image format:	JPEG
Video format:	H.264, 720p 30fps (1280 x 720)
Image stabilization:	Lens shift-type, approx. 3-stop effectiveness
ISO:	Auto or manually (80, 100, 200, 400, 800, 1600)
Focusing:	TTL, 9-point or 1 point centre AF focus
Working Range:	3cm (wide angle macro) to infinity
Flash:	Built in or external flash (Lantern Shark) with manual or auto adjustment. The 6,000MSW titanium body version is not equipped with internal flash unit.

### LENS

Aperture:	f/2.8 – 5.9
Focal length:	4x optical zoom 5 - 20mm (28 - 112mm, 35mm equivalent)
Focus:	Auto and Focus Lock
Front port:	Plain

### PHYSICAL PROPERTIES

Dimensions:	Ø: 83mm x L: 170mm (excl. connector)
Weight air / water:	2.8kg / 1.7kg (duplex)
Housing material:	Duplex Stainless Steel, Hard Anodised Aluminium or Titanium alloy
Depth rating:	3,000MSW (1,000MSW Aluminium and 6,000MSW Titanium versions available)
Operating temp:	0 - 40 °C

### POWER

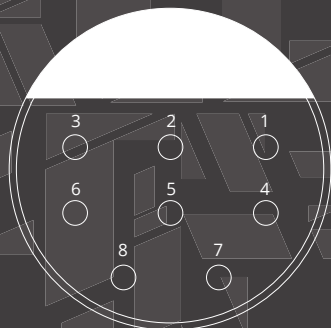
Operating voltage:	18V - 36V DC
Current draw:	<400mA (1200mA peak with flash)

# Appendix 1 - Connector configuration

## TIGER SHARK CAMERA PIN-CONFIGURATION, STANDARD CONNECTOR

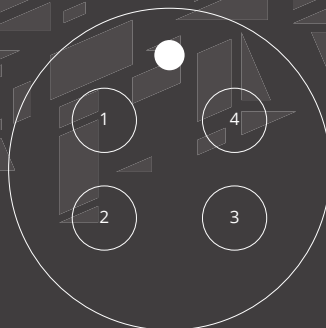
### Tiger Shark housing MAIN connector **8 pin Mini Burton 5506-1508**

Pin 1: 0V / gnd / downlink  
Pin 2: +18-36 VDC  
( $<400\text{mA}$ ,  $1200\text{mA}$  peak)  
Pin 3: Ethernet TX+ (RJ45 - pin1)  
Pin 4: Ethernet TX- (RJ45 - pin 2)  
Pin 5: Video out (composite)  
Pin 6: Ethernet RX+ (RJ45 - pin3)  
Pin 7: RS232 remote control RX  
(9600-8-N-1)  
Pin 8: Ethernet RX- (RJ45 - pin6)



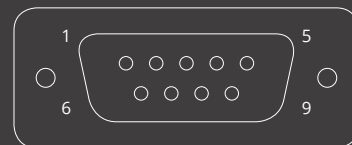
### Tiger Shark housing FLASH connector **4 pin MWC-MC-BH-4F**

Pin 1: 0V / gnd  
Pin 2: 24VDC  
Pin 3: Light  
Pin 4: Trigger



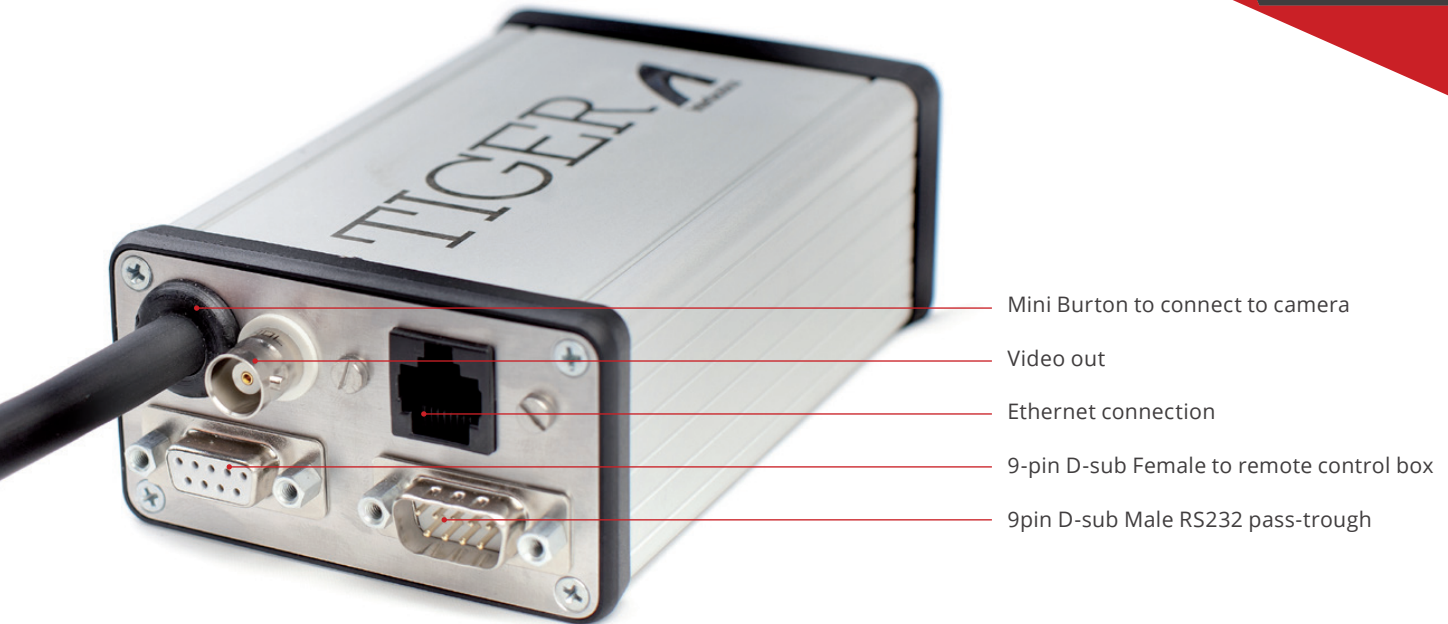
### External RS232 remote control unit **9 pin male D-SUB RS232**

Pin 1: NC  
Pin 2: NC  
Pin 3: TX  
Pin 4: NC  
Pin 5: 0V / GND  
Pin 6: NC  
Pin 7: NC  
Pin 8: NC  
Pin 9: NC



## Appendix 2 - Interface overview

Tiger  
**SHARK**





## Appendix 3 - RS232 remote control protocol

Controlling the Tiger Shark is done by sending RS232 Ascii text commands to the camera at 9600 baud with 8 data bits, 1 stop bit and none parity. Each command must have proper string termination (New Line <0x0A> and Carriage Return <0x0D>). Each command represents pressing down a remote control function button and must be released by sending the Release command after a short time period.

Control example: Turning on the camera, take a picture and turn off the camera again.

1. **FUNC 7<0x0A><0x0D>** - Turn camera on by pressing the Power button. Wait 100ms or more to give camera time to register button press.

2. **STOP<<0x0A><0x0D>** - Release button. Wait 5 seconds or more for camera to initialize.

3. **FUNC 16<0x0A><0x0D>** - Trigger button pressed. Wait 100ms or more to give camera time to register button command.\*

4. **STOP<<0x0A><0x0D>** - Release button (picture is taken at release). Wait 2 seconds or more for camera to finish processing the image.

5. **FUNC 7<0x0A><0x0D>** - Turn camera off by pressing the Power button. Wait 100ms or more to give camera time to register button command.

6. **STOP<<0x0A><0x0D>** - Release button

\*If Trigger is pressed for only a short time (>100ms) and released, the camera will perform an autofocus and take a picture instantly when focus is found. If trigger is keep longer the camera will continue to auto focus until trigger release (picture is taken at release).

## Appendix 3 - Tiger Shark remote Functions

RS232, 9600 BAUD, 8 DATA BITS, 1 STOP BIT AND NONE PARITY

Function	Commant string
Mode Up	FUNC 1
Mode Down	FUNC 2
Play	FUNC 3
Left	FUNC 4
Menu	FUNC 5
Laser	FUNC 6
Power	FUNC 7
Zoom In	FUNC 8
Zoom Out	FUNC 9
Up	FUNC 10
Set	FUNC 11

Function	Commant string
Down	FUNC 12
Flashlight	FUNC 13
USB	FUNC 14
Focus	FUNC 15
Trigger	FUNC 16
Display	FUNC 17
Right	FUNC 18
IntExtFlash	FUNC 19
Flash Up	FUNC 20
Flash Down	FUNC 21
Release	STOP



## Appendix 4 - Checklist/Final Test

PLEASE SEE "QUALITY CONTROL DOCUMENT"  
WHICH IS ENCLOSED WITH THE PRODUCT.

Tiger  
*SHARK*



## Notes

This image shows a blank sheet of white paper with horizontal blue or grey ruling lines, typical of notebook paper. The lines are evenly spaced and run across the width of the page. There are no margins, text, or other markings on the paper.





# Warranty

Imenco AS ("Imenco") warrants this product against defects in materials and workmanship for a period of three (3) years from the date of original purchase ("Warranty Period"). Imenco's warranty obligations for the product are limited to the terms set forth below:

Imenco must be notified in writing within 14 days of such defect or failure, at which time Imenco will provide instructions on the warranty claim procedures to be followed.

If a defect arises and a valid claim is received by Imenco within the Warranty Period, at its option, Imenco will (1) repair the product at no charge, using new or refurbished replacement parts, (2) or exchange the product with a product that is new or which has been manufactured from new or serviceable used parts and is at least functionally equivalent to the original product.

Imenco warrants replacement products or parts provided under this warranty against defects in materials and workmanship from the date of the replacement or repair for ninety (90) days or for the remaining portion of the original product's warranty, whichever provides longer coverage for you. When a product or part is exchanged, any replacement item becomes your property and the replaced item becomes Imenco's property.

## EXCLUSIONS AND LIMITATIONS

This limited warranty applies only to the product manufactured by or for imenco that can be identified by the "shark range", trade name, or logo affixed to it. This limited warranty does not apply to any non-imenco hardware product or any software, even if packaged or sold with the imenco hardware product. Non-imenco manufacturers, suppliers, or publishers may provide a separate warranty for their own products packaged with the imenco hardware product.

Software distributed by imenco under the imenco brand name is not covered under this limited warranty. (Refer to imenco's software license agreement for more information).

This warranty does not apply: (a) to damage caused by accident, abuse, misuse, misapplication, or to non-imenco products; (b) to damage caused by service performed by anyone other than imenco; (c) to a product or a part that has been modified without the written permission of imenco; (d) if the product has not been given the overhaul and preventive maintenance given by imenco and stated in the user manual, or (e) if any imenco serial number has been removed or defaced.

To the maximum extent permitted by law, this warranty and the remedies set forth above are exclusive and in lieu of all other warranties, remedies and conditions, whether oral or written, express or implied. Imenco specifically disclaims any and all implied warranties, including, without limitation, warranties of merchantability and fitness for a particular purpose. If imenco cannot lawfully disclaim or exclude implied warranties under applicable law, then to the extent possible any claims under such implied warranties shall expire on expiration of the warranty period. No imenco reseller, agent, or employee is authorized to make any modification, extension, or addition to this warranty.

To the maximum extent permitted by law, imenco is not responsible for direct, special, incidental or consequential damages resulting from any breach of warranty or condition, or under any other legal theory, including any costs of recovering or reproducing any program or data stored in or used with the imenco product, and any failure to maintain the confidentiality of data stored on the product. Imenco specifically does not represent that it will be able to repair any product under this warranty or make a product exchange without risk to or loss of programs or data.

For consumers who have the benefit of consumer protection laws or regulations in their country of purchase or, if different, their country of residence, the benefits conferred by this warranty are in addition to all rights and remedies conveyed by such consumer protection laws and regulations. To the extent that liability under such consumer protection laws and regulations may be limited, imenco's liability is limited, at its sole option to replacement or repair of the product or supply of the repair service again.

## OBTAINING WARRANTY SERVICE

Please review the online help resources referred to in the accompanying documentation before seeking warranty service. If the product is still not functioning properly after making use of these resources, access the online website: [www.imenco.com/support](http://www.imenco.com/support) for instructions on how to obtain warranty service. Before a warranty service is shipped for repair the shipment and product has to be marked with a service no. issued by Imenco.