

Piranha® Anode Clamp



Used in Offshore Wind projects to connect sacrificial anode cages to monopile foundations

The main benefits of choosing an Imenco Retrofit Earthing Connector are the strong mechanical hold, excellent electrical connection, and ease of installation.

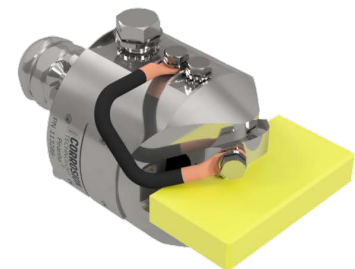
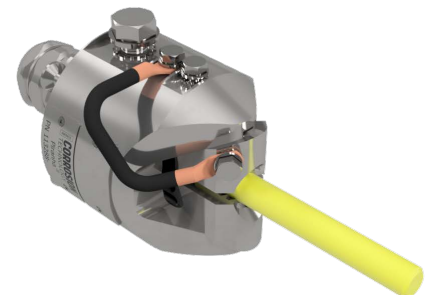
For further information, email
commercial@imenco.com

Piranha® Anode Clamp

The clamp is guided into place by an ROV and tensioned with a torque tool to ensure a reliable and fast installation. Sacrificial Anodes may be attached directly to the clamp, or by an earthing cable to an anode sled. The Piranha® Retrofit Earthing Connector provides a low-resistance electrical connection between a subsea structure/component and sacrificial anodes. The Piranha® literally bites into the steel through coated surfaces.

With flexibility in mind, the Piranha® supports earthing cables from 16-240 mm². When needed, the cables can be fitted with a bend stiffener to protect the termination on the Piranha®. For smaller subsea structures/components, the Piranha® can have anodes directly attached, providing a complete cathodic protection system as one small unit. With an active cathodic protection system, the Piranha® is designed to last for 25 years.

Piranha® S2	
Product ref.	113288
Weight	~8 kg
Material	Low-alloy carbon steel (main parts) Stainless steel (Bolt, washer, sign) Insulated tin-plated copper cable Tin-plated copper cable lugs
Jaw sizes	Plate: 5-35mm plate thickness Rod: 16mm and 20mm rod diameter, other sizes upon request.



Piranha® M2	
Product ref.	114242
Weight	~9 kg
Material	Low-alloy carbon steel (main parts) Stainless steel (bolt, washer, sign) Insulated tin-plated copper cable Tin-plated copper cable lugs
Jaw sizes	Plate: 35-55mm plate thickness Rod: Upon request